



Coachella Valley
Watercolor Society
Est. 1989

Brush Up

February 2018

In This Issue:

Demo by Joseph Stoddard.

President's Message

Painter of the Month - Jan.

Art News and Kudos

Field Mice

Member Profiles

Art Tips

**Next General Meeting:
at Joslyn Sr. Center, Feb. 12, 2018 - 6:30PM**

Demo by Joseph Stoddard

Joseph Stoddard is a partner at SKA Design (an environmental graphics design office) located in South Pasadena. He has produced paintings for a number of Pasadena events, including the Bungalow Heaven Annual Tour, the Colorado Street Bridge Party, the Pasadena Showcase House of Design, the California Art Club Artists for Architecture Painting Project, the Pasadena Symphony and the Pasadena Pops Orchestra. His work was recently featured in the latest issue of *The Art of Watercolor*, a French art magazine, as well as *Studios Magazine*, and *Watercolor Artist* magazine. His studio was featured in *The Man Cave Book*.



His work has also been on the covers of a variety of publications including *Westways Magazine*, *Pasadena Magazine*, a book series published by the Historical Society of Southern California, and the *Lost and Found Series* by Many Moons Press. In 2001 a book of his sketches entitled *Pasadena Sketchbook* was published. The second edition was published in October of 2008. A collection of sketches of the University of Redlands entitled *Redlands Sketchbook* was published in 2007. Walter Foster Publishing published *Expressive Color*, a painting instruction book, in August of 2008.

Bring your friends to the CVWS Annual Show Reception - Jan 31st - 5pm-7pm

President's Message



"I found I could say things with color and shapes that I couldn't say any other way - things I had no words for." **Georgia O'Keeffe**

Our Coachella Valley Watercolor Society's Annual Show will be in a new venue this year! Centrally located in Palm Desert, and in the beautiful Auditorium at Hope Lutheran Church. It's large and spacious, with ample parking. Our Board, and our Co-Chairs Kathleen Scoggin and Alicia Siegler, as well as many members, are working to make this show a tremendous success!

So please get your show entries ready, and mail the entry forms by January 24th or sooner! Interest has been high this year to attend the Show Reception January 31st. We look forward to sharing your beautiful paintings and this time together!

Interest has also been high for our 4-day Tom Francesconi Watercolor Workshop to be held at Best Western, Palm Desert March 13th-16th! Tom is a nationally recognized artist from the Chicago area and taught here with us 8 years ago. He is back by popular demand. There are a few spaces open, so sign up today! Contact me for information...or go to the CVWS Website: <http://cvws.org>.

Our CVWS Nominating Committee Chair, Connie Collins will be contacting you to help us out next year in the following positions:

Program Chair: Schedule Demonstrators for our monthly meetings

Special Activities Chair: Schedule unique events for members.

Sunshine Chair: Send cards to members who are ill, or have other needs for encouragement and support.

Life Drawing Chair: Arrange for models for our Life Drawing class - January-March on the 2nd and 4th Fridays at Portola Community Center 9am - noon.

If you have an interest in being helping with these positions, please contact Connie Collins or myself! You will have our support and assistance in fulfilling these positions!

As with all organizations, it takes you to make our success a reality! Please participate and join us having a wonderful time while making CVWS beneficial to all our members and guests!

And keep your brushes flying! Diane Moore, President

CVWS 2017-2018 Officers

President:

Diane Archie Moore

Exec. VP:

Marcia Slater Hatfield

Programs:

Robin St. Louis

Shows:

K. Scoggin, Alicia Siegler

Publicity:

Marilyn Blitz

Treasurer:

Cindy Mason

Secretary:

Nancy Rizzardi

Newsletter

Connie Zane

Website

Lance Brechbill

2017-18 Committee Chairs

Equipment:

John Ressler, Jim Nelson

Field Mice:

Sue Ober

Historian:

Joyce Kingman

Hospitality:

Donna Clack

Life Drawing:

Imelda Gregov, Vera Knowles

Membership/Directory:

Connie Collins

New Member Liaison: Open

Painter of the Month:

Moira Johannessen

Raffle:

Tracy Hartman

Sunshine:

Gloria Mucciolo

DVD Library:

Mike Collins

Workshops:

Diane Moore, Nina Harlan

Special Activities:

Sonja Ravet, Sylvia Smith

Don't forget Life Drawing at the Portola Community Center the First and Fourth Fridays of each month.

January Painters of the Month



1st Place: Nancy Rizzardi



2nd Place & Demo Choice: John Ressler



3rd Place: Veronique Branger



Hon. Mention: John Hannah

Please sign up for Painter of the Month at our monthly meetings. Updated Painter of the Month rules have been emailed to members. If you didn't get a copy, See Moira Johannessen.

Art News and Kudos

January Demo Artist, Susan Keith, did a first layer of painting on hot press paper with beautiful, watery transparent colors.



Palm Springs Art Museum Special Event

Enter the World of Warhol
January 27th.

Call the Museum ticket office for info and tickets.

CREATE CENTER FOR THE ARTS

NEW LOCATION: 73773 Fred Waring #106,
at the corner of San Pasqual in Palm Desert.

JOIN US FOR OUR ANNIVERSARY CELEBRATION
SATURDAY, FEB 13, 20185pm - 7pm

Art Stations Food & Drink Raffle Prizes Art for Sale
Tours of our beautiful new space

Art on the Edge Exhibit

UCR Gallery showing from Jan 12th to Feb 23rd
75080 Frank Sinatra Drive, Palm Desert. 760-834-0800

Works by Marie Burdick, Connie Collins, Nancy Frey, Cindy Mason, Diane Moore, Sonja Price Ravet, Nancy Rizzardi, Kathleen Scoggin, Alicia Siegler and Sylvia Smith

Volunteers Still Needed:

Life Drawing Chair for 2018-2020

Hospitality Chair and volunteers for 2018-2020

Contact cpinenuts@gmail.com with your achievements/kudos. Emails are due by the 20th of each month. No email reminders will be sent so YOU must remember to let us know your painting news. Please include a photo & title of your painting, if possible.

Field Mice

February 6th Indian Wells Tennis Gardens

- Well not actually the gardens.....
- Going south on Washington turn west on Miles Road for parking lot.
- Ron Hanner has recommended a location in the parking area south of the Tennis Gardens.
- There is a great view to the south of the La Quinta Sawtooth Mountains.\Bring a Lunch

February 13th El Mirador – Palm Springs

- Desert Regional Medical Center.
- 1150 N Indian Canyons Drive
- Bring a Lunch

February 20th Cahuilla Hills Park, Palm Desert

- 45825 Edgehill Dr., Palm Desert
- Bring a lunch.

February 27th Vintage Nursery

- 78755 Darby Rd., Bermuda Dunes
- Bring a lunch

CVWS Plain Air Painters gather each week to paint local sites and share their paintings over lunch. We love being out in the landscape to capture how beautiful this desert is. If you haven't tried it, you should.

There's nothing better than actually "being there" for experiencing the beauty of desert scenes and historic places. We encourage you to join us. Bring a lunch and your art materials...simplified for outdoor painting. A pared down palette, a hat. You can paint on a board on your lap, or bring a chair and an easel that can be easily set up and a small table to put your supplies on. There are many suggestions online about ways to do this. Or call Sue Ober for suggestions. Those of us that have done outdoor paintings for many years still find this the best source of inspiration.

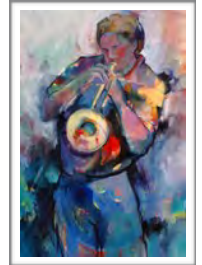


Ron Hanner

Member Profiles

Nationally known **Suzanne Blau Greenberg** was introduced oil and watercolor painting, as a child in Palm Springs. As an adult, she uses oils and acrylics, and for the last 20 years, has focused mostly on water media. Her favorite subjects are people with musical instruments, dancers, still life and non-objective collage. A past CVWS President, she is a signature member of Watercolor West, San Diego Watercolor Society, Oklahoma Watermedia Assn., and the National Watercolor Society. She teaches workshops, does demos, juries for art societies and operates a studio, helping artists enhance their work using a minor hands-on approach and a myriad of information. She's entered and won a long list of competitions in the U.S.

Editor's Note: *Suzanne's many credentials and awards could fill the rest of this page.*



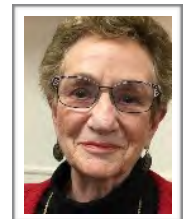
A few years ago, we took a watercolor journaling workshop together and found our creative side. We signed up, on a lark, as a special way to enjoy a wedding anniversary trip to Pacific Grove, our first home together 40 years ago. We travel each summer and carry our paint pans and paper with us, stopping to paint plein air at interesting sights along the way. As novices, we learn something new each time we open our journals, and we meet the most interesting strangers who stop to talk and want to know more. We think of our shared hobby as a way to create and preserve memories for ourselves and to share our adventures with our children and grandkids. Now that we've moved from the East Coast to the desert, we find we have less time to paint, not more. We're hoping to join in the fun with the field mice and paint a little more often. **Linda and Tim Henry (and Harper & Grace)**



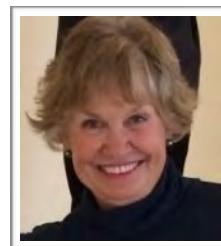
I'm **Jan Effline**. Out of necessity in recent years, I have had to learn to paint in an entirely different way - right hand to left hand - which led to abstracts from realistic paintings. I spent years drawing with various mediums before I ever picked up a brush - not a bad way to learn. Then it was oils and finally watercolors.

I painted pictures of homes for realtors and developers (the latter were from blueprints) that were used for advertising and gifts. I was all over the city of Denver with my camera, which was fun. Some houses were new, some partially finished, or even old; so I got to paint landscaping. That all ended when I had a stroke.

I began painting abstracts with pastels, with my left hand: right brain, left hand. As the saying goes when you are given lemons, you make lemonade. I gradually went back to watercolor, not too successfully; and I'm now trying acrylics. It's hard to change your style when using an old familiar medium. Pastels were new to me, but easier to use and more enjoyable. For a fun exercise try drawing or painting with your non-dominant hand; the results may surprise you. (Try brushing your teeth with that hand first!)



I am **Susan Jacklin** from Post Falls in North Idaho. I am living in the desert for three months, - a snow bird! I taught art to elementary children, and started my love of water color by watching Japanese ink painting, and sumi-e painting. We have a lot of PowWows in Idaho, so I did a lot of Native American watercolors. I also love plein air painting. My work tends to be more impressionistic!



Editor's Note: *These member profiles are a way for members (both old and new) to get to know one another. If you'd like to share your story, a painting and your photo, please send them to: cpinenuts@gmail.com*

Tips & Techniques

PAINTING LOOSELY IN WATERCOLOR By Moira Johannessen

We all laugh about the fact that everyone says they want to paint more loosely. I think it is because as beginners we want to be accurate about what we paint, to be true to the subject. This doesn't help make a subject "loose and free". If you then decide to be "really" loose, what happens is you paint a messy painting that ends up in the waste bin.

There are degrees of looseness. I like the kind where one loses the edges. Even that can be difficult. We just have to paint in that one last hard edge! Force yourself to leave them alone. Make a point to letting things flow together.



I find the best time to be loose is after you have painted for a while, at the end of a painting session. Paint something you know. Load your brush with color, draw with the brush. Get some more color and let that color bleed into the first. Use clear water to make the colors flow. Leave the results until the next day to see what you think.

Some subjects are easier to paint loose. Try landscapes and florals first. Observe other artists' loosely rendered subjects. Draw with the brushes rather than a pencil. Invent loose backgrounds for subjects you paint.

Remember you are an artist first. You do not want your painting to look like a photograph. Let some blossoms remain, put in some crazy colors, paint things over while they are wet.

Important Reminder:

From now on, you will access the newsletter from our Web site:

Click on this link: [Http://cvws.org](http://cvws.org)

At the top, the left of the brush logo... are 3 lines (meaning directory). Click on the 3 lines.

A menu pops up. Click on "Members".

A list pops up and about 3-4 items down it says Newsletters...click on that.

Then click on the issue you want to see!

Now that our Web site is updated and running smoothly, this is where you will find most all information, Show entry forms, Exhibition Rules, Workshop signup sheets, etc!

I'll be letting you know when each new newsletter is available!

Diane Moore, President

CVWS Instructors

Ron Hanner	760-636-5766
Moira Johannessen	760-322-2523
Pat Kodet	530-388-8241
Diane Morgan	760-902-8855
Sonja Price Ravet	425-747-6748
Kathleen Scoggin	503-515-9633
Connie Zane	775-846-9719

From the "Bob Blasts" email videos of Bob Burrige:

Keep in mind the four "C's" when you begin a painting.

Concept - (What's the main idea?)

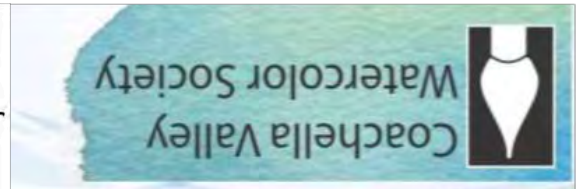
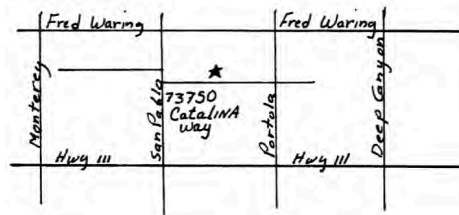
Color - (Determine your color scheme from the start)

Composition - (Choose a format and design plan)

Commitment - (meaning: don't change your mind in the middle of a painting.)

If you don't get the Bob Burrige "Bob Blast" emails. Go to www.robertburrige.com and sign up. While he paints primarily in acrylics, his teachings apply to all art. Nearly all well-known artists offer newsletters full of painting tips. Visit their websites for details.

Joslyn Center is located at 73750 Catalina Way, Palm Desert, CA 92260. It is about half way between San Pablo Ave. and Portola Ave, South of Fred Waring Dr. and North of Highway 111. You can access is from either Portola or San Pablo.



General Meeting - Joslyn Center, 6:30 PM

Joslyn Center is located at 73750 Catalina Way, Palm Desert, CA 92260. It is about half way between San Pablo Ave. and Portola Ave, South of Fred Waring Dr. and North of Highway 111. You can access is from either Portola or San Pablo.

